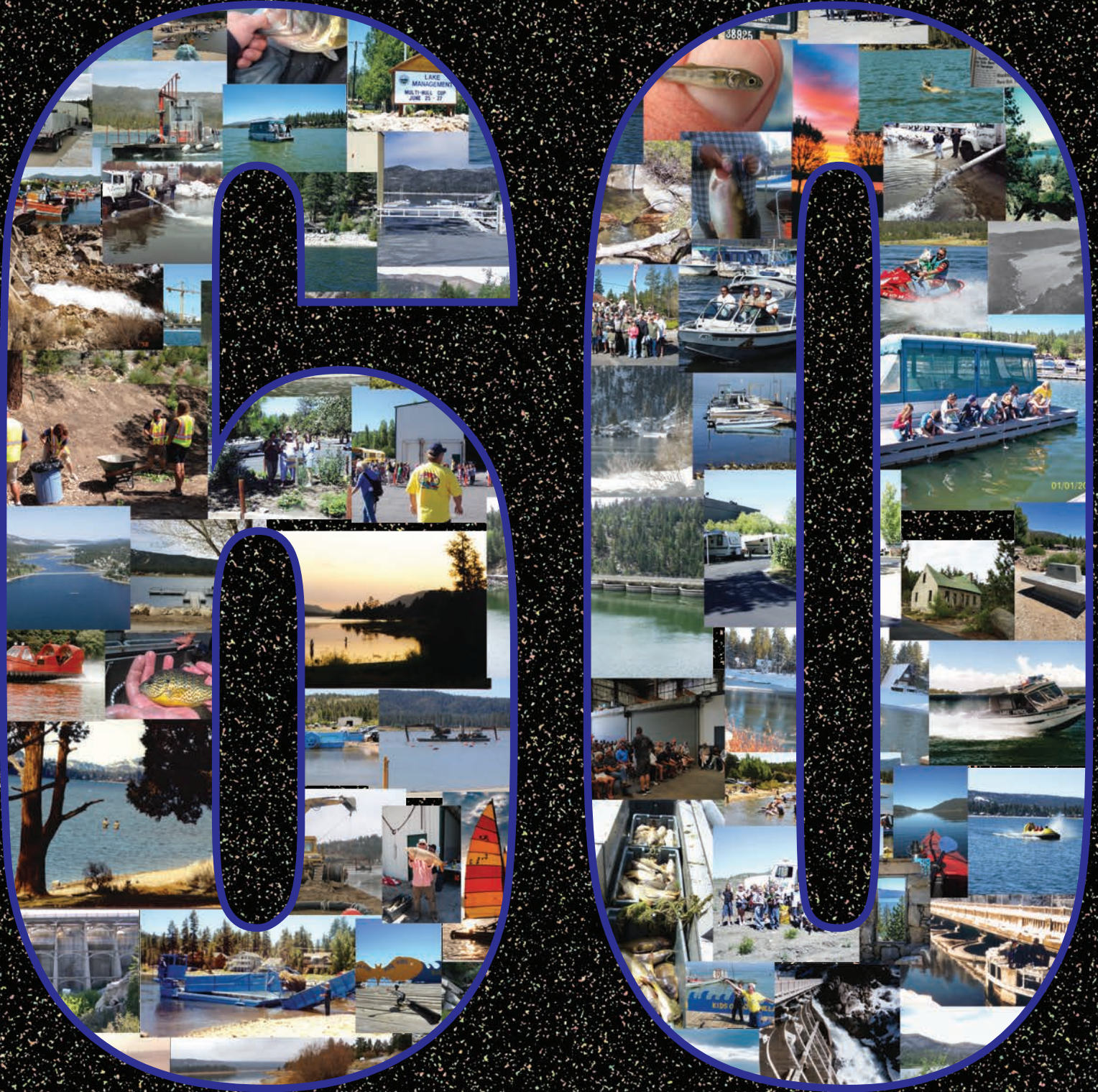


# MOUNTAIN WATERS DISPATCH

Big Bear Lake Boating Guide



60 Years of Lake Management  
1964 - 2024

[www.bbmwd.com](http://www.bbmwd.com)

# Welcome to Big Bear Lake

Nestled amongst the trees over a mile high in the San Bernardino Mountains lays Big Bear Lake. From April to November, boaters, swimmers, anglers, and sunbathers are a welcome sight. For 60 years, the Big Bear Municipal Water District has maintained and improved Big Bear Lake.

## Meet the Board of Directors

Steve Ludecke  
President  
Division I



Bob Rehfuss  
Division II



Craig Brewster  
Vice President  
Division III



Mark Lee  
Division IV



Tom Bradford  
Division V



# Message from the General Manager



**Brittany Lamson**  
**Interim General Manager**

First off, I would like to introduce myself, my name is Brittany Lamson and I had the honor of being appointed as the District's Interim General Manager last October here at the Big Bear Municipal Water District. Although I am new to the position, I have been working at the District for almost seven years.

Keeping the District's agenda moving forward has always been a specialty of mine, and I have enjoyed the learning experience to say the least.

We have been lucky enough to have two good winters back-to-back to build our water storage in the Lake. These large inflow years not only help to maintain the water level for recreation but also help our environment and water quality. Last year we saw the water quality improvements that lasted through the entire boating season and this year expect to see even more improvements to our Lake.

Preseason planning is underway, and as always, our goal is to provide a safe and enjoyable lake experience to all our lake visitors. Looking forward to seeing you out on the Lake, and our staff is always available to assist with your lake and boating needs.

**Happy Boating!!!**

# Contents

1. Welcome

2. Message from the General Manager



6. Lake Info & Events

7. Swimming

8. Life Jackets



9. Ramp Hours

10. Lake Use Permits



11. & 12. Lake Map



# Contents Cont.



13. Carriage Requirements

14. Boater Card

15. Decontamination



16. Quarantine Bands

17. Fishing

18. The Marsh



19. & 20. Quagga Mussels



21. Games

22. Hiking Trails



# GET INVOLVED

Residents and visitors alike can take part in volunteering for shoreline, park and trail clean-ups and restoration projects. We take pride in our continued efforts to keep Big Bear beautiful and encourage all with a love for our home to join us. To find out more about volunteering with us and other environmental organizations, visit us online at [bigbear.com/care-for-big-bear/volunteer/](http://bigbear.com/care-for-big-bear/volunteer/).

@CAREFORBIGBEAR ♦ #CAREFORBIGBEAR



LEARN MORE AT [BIGBEAR.COM](http://BIGBEAR.COM)



## Join Us

June 8-9th 2024



**OVER \$50,000  
IN PRIZES**

**5-TAGGED TROUT  
WORTH \$10,000 EACH**

Along with tagged trout, reel in cash prizes with Top 3 weight class awards.

**REGISTER ONLINE  
BIGBEAR.COM**

## Check Out Our Visitor Center

40824 Big Bear Blvd, Big Bear Lake, CA. 92315



Adventure Passes \* Maps  
Apparel \* Visitor Magazines  
Post Cards \* Stickers  
Visitor Information  
Big Bear Mountain Resort Station

~~~~~ CONNECT WITH US ~~~~~

@visitbigbear @visitbigbear

#YOURMOUNTAINLAKEESCAPE

# General Lake Info

Max lake volume: 73,320 acre-feet (23.9 billion gallons)

Max lake area: 2,971 acres (slightly larger than LAX airport)

Length of Shoreline: 22 miles

Average depth: 35 feet

Maximum depth: 72 feet



## 2024 Lake Events

Big Bear Lake Rotary Club Boat Parade of Lights  
September 1

★  
Start of Boating Season  
April 1st

FREE Fishing Day  
July 6th

FREE Fishing Day  
August 31

Lakefest  
August 31 & September 1

Carp Round-Up  
June 15th & 16th

Fishin' for 50K  
June 8th & 9th

Troutfest  
October 5th & 6th

Fourth of July Fireworks  
July 4th

★  
End of Boating Season  
November 30



# Swimming

Swimming in Big Bear Lake can be fun, but also dangerous if done irresponsibly. High-altitude, cold-water temperatures, and rapidly changing weather conditions can present a challenge even to the most experienced swimmers. These factors lead to fatigue much quicker than swimming at lower elevations.

**NO SWIMMING  
OFF RENTAL BOATS**

## Tips For Safe Swimming

- Scope out your swimming area, make sure it is clear of aquatic plant life
- Never swim alone, use the buddy system
- Stretch and warm up before swimming
- Wear a Life Jacket and know your type
- Pay close attention to children swimming
- “Grab and Throw, Don’t go.” Throw something that floats or grab a pole to assist a swimmer in distress, do not jump in and attempt to save them, call for help.
- If you become fatigued, don’t panic, float on your back, and relax your breathing.
- Learn to save lives, enroll in a CPR and First Aid course
- Do not swim during a storm

**SWIMMING IS LIMITED TO  
WITHIN 50FT OF SHORE  
OR 20 FEET OF A PRIVATE DOCK**

**SWIM AT  
YOUR OWN RISK!**

**SCUBA DIVING  
IS PROHIBITED  
IN BIG BEAR LAKE**

**THERE ARE  
NO LIFEGUARDS  
ON DUTY AT BIG BEAR LAKE**



**NORTH SHORE LANDING**

Jet Skis • Wakeboarding  
Pontoon Boats • Canoes • Kayaks • SUP

909-878-4FUN(4386)  
**BigBearBoating.com BOOK ONLINE**

38573 North Shore Drive, CA • (2 Miles East of Dam on Hwy. 38 - Mile Marker 58.00)

*Enjoy Our Exclusive Beach!*



# Life Jacket Updates

Starting this year, new Coast Guard approved life jackets will come with new labels and icons. The type I-V system will be phased out and a new system will be used instead.

Going forward, three different types of icons will be found on the label of PFDs:

Performance Rating Icons – 50, 70, 100, 150 with an image indicating buoyancy. The higher the number, the greater the flotation.

## CHOOSE THE DEVICE YOU WILL WANT TO WEAR

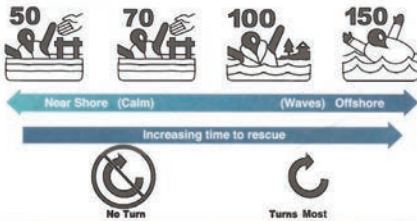
### SIZE & FIT

- Check label for user weight and chest size.
- Different body types float differently.
- Try your device on in the water to ensure your airway is clear.
- A good fit is secure, comfortable, and adjustable.

### TRY IT ON

### PERFORMANCE

- Lower level number generally offers greater mobility, comfort, and style with good flotation for most people.
- Higher level number generally offers greater flotation, turning, and stability in the water.



### CONSIDER YOUR ACTIVITY & ENVIRONMENT

### WATER SAFETY INFO

- In over 80% of boating fatalities the person was not wearing flotation.
- Most of these are sudden falls overboard or capsizing of a small boat.
- The first moments in the water are critical, even for experienced swimmers.
- Cold water shock causes involuntary gasping, loss of muscle control and swim failure.
- Long term immersion in cold water causes hypothermia and requires thermal protection and flotation in the HELP position to conserve energy.

### FLOTATION DEVICES SAVE LIVES

### DESIGN TYPES

- **INHERENT** – built-in flotation (always buoyant).
- **INFLATABLE** – activated gas canister inflates chamber(s) (no buoyancy until time of inflation, requires canister replacement, may be manual, may require secondary action to don).
- **HYBRID** – combination of flotation and inflation (some immediate buoyancy and supplemental when inflated, may require canister replacement).
- **SPECIAL PURPOSE** – your activity may require special features (safety color, harness, straps, etc.) and accessories (whistle, lights, reflectors, etc.) for certain conditions.

### YOUR DEVICE ONLY WORKS WHEN WORN

### MAINTENANCE

- Over time, exposure to sun, salt, fuel, and mildew can damage device.
- Allow to air dry. Inspect and test regularly.
- Inflatables require replacement rearming, repacking and regular servicing.

### READ, SAVE AND FOLLOW INSTRUCTIONS

### WARNINGS

- Children should have adult supervision when on or near the water.
- Devices must be fastened correctly and securely.
- Some devices were not designed for certain activities or conditions such as water skiing, towed sports, personal watercraft (PWC) or whitewater paddling.



### CHECK LABEL FOR LIMITATIONS OF USE

### APPROVAL

- Some devices are approved only when worn.
- Check federal, state/provincial and local requirements for carriage, use and wear.



US Coast Guard



Transport Canada

### WEAR IT

For more info on the right choices for yourself, your family and friends...

Visit [www.wearitlifejacket.org](http://www.wearitlifejacket.org)

## New Life Jacket Ratings

### Level 50 Buoyancy Aid:

Not recommended for weak or non-swimmers. No self-turning ability.

### Level 70 Buoyancy Aid:

Equivalent to the old system's Type III PFDs. They are the most common PFDs worn by recreational boaters.

No self-turning ability.

### Level 100 Buoyancy Aid:

High flotation PFD. Some self-turning ability.

### Level 150 Buoyancy Aid:

High flotation PFD. Offshore waters, self-turning ability.



**BOATS  
& RENTALS**



**JET SKIS**



**KAYAKS  
& SUPs**



**PINE KNOT MARINA**

*Where the Village Meets the Lake*

**FULL SERVICE MARINA**

**909-633-7511 • PineKnotMarina.com**

# Ramp Hours

## EAST PUBLIC LAUNCH RAMP 41911 NORTH SHORE DR.

### Early Season

April 1 - May 23

Daily

7:00AM-3:00PM

### Peak Season

May 24 - September 2

Daily

6:00AM-6:00PM

### Late Season

September 3 - November 30

Daily

7:00AM-3:00PM

### Winter Season

December 1 - March 31

-CLOSED

## WEST PUBLIC LAUNCH RAMP 38925 NORTH SHORE DR.

### Early Season

April 1 - May 23

-CLOSED

### Peak Season

May 24 - September 2

Daily

7:00AM-3:00PM

### Late Season

September 3 - November 30

-CLOSED

### Winter Season

December 1 - March 31

-CLOSED

# Lake Use Permits

All vessels that operate on Big Bear Lake must be inspected prior to launch and must have a current lake use permit. All registered vessels must have current registration.

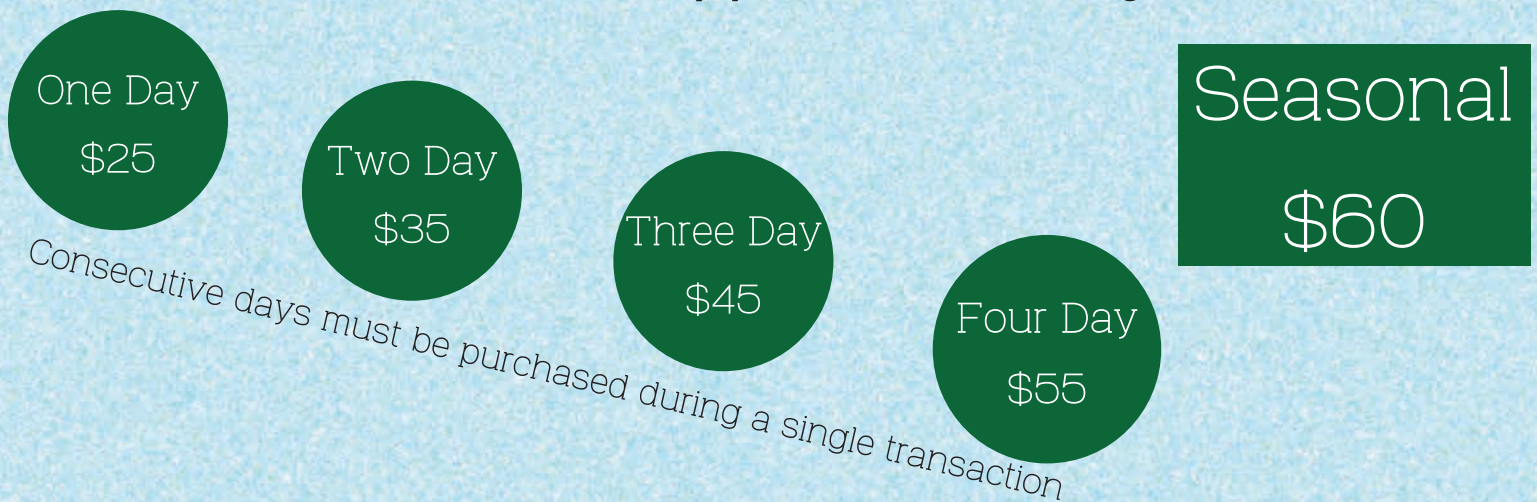
## Registered Vessels

Motorized vessels up to 26 feet in length and sailboats over 8 feet in length, power boats, personal watercraft, e-Foil boards



## Non-Registered Vessels

Non-motorized vessels and sailboats 8 feet or less in length. Kayaks, canoes, sailboards, stand-up paddle boards, fishing float tubes



2024 Seasonal Lake Use Permits are valid from April 1, 2024 to March 31, 2025

# LEGEND

- |                                                                                                                         |                                                                                                       |
|-------------------------------------------------------------------------------------------------------------------------|-------------------------------------------------------------------------------------------------------|
|  MARINA                                |  PLACE OF INTEREST   |
|  PUBLIC LAUNCH RAMP                    |  HOSPITAL            |
|  FUEL DOCK                             |  RANGER STATION      |
|  PUBLIC RESTROOM                       |  CAMPGROUND          |
|  RESTROOM ON LAKE                      |  PICNIC AREA         |
|  WATER QUALITY MONITORING STATION BUOY |  HANDICAPPED ACCESS  |
|  LIFEGUARD SERVICED SWIM AREA          |  TRASH CAN SITE      |
|  WATERSKI BEACH                        |  WILDLIFE PRESERVE   |
|  FISHING HOLE                          |  PUBLIC FISHING DOCK |



## Lake Buoys



**DANGER**  
Marks random hazards such as rocks, shoals, and pipes. Also indicated by a red or orange ball.



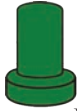
**SHALLOW WATER**  
Black and white striped cardinal buoys indicate shallow areas. Boats should not pass between this buoy and the nearest shore.



**SPEED CONTROL**  
White no-wake buoys are placed along the perimeter of the Lake and indicate a reduced speed area. Any boats traveling between the buoy line and shore must travel at or below 5mph.

# Channel Markers

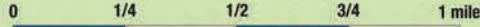
*"Red and Green, Stay in Between"*



When you see red and green marker buoys, stay in between them. This will ensure safe egress entering and departing your launch ramp or marina.



When you're heading back to the launch ramp or marina, the red markers should be on your starboard (right) side. *"Red Right Return"*



# Lake Buoys



**MOORING BUOY**  
Located at the west end of the Lake near the Dam. This is the only buoy that is legal to tie off to.



**WATER QUALITY MONITORING STATION**  
Marks the points on the Lake where the District gathers Lake water data throughout the season.



**SPECIAL USE AREA**  
A solid yellow buoy indicates a special use area.

# Carriage Requirements

## Personal Flotation Device

All vessels on Big Bear Lake must have enough USCG approved personal flotation devices accessible for all persons on board. PFD's must be worn at all times by children under 13 years of age. Make sure all PFD's are in good condition and fit appropriately. Type I, II, III, and V are still acceptable as long as they are in serviceable condition.



## Fire Extinguisher

All motorized vessels must carry a functional Class B fire extinguisher.

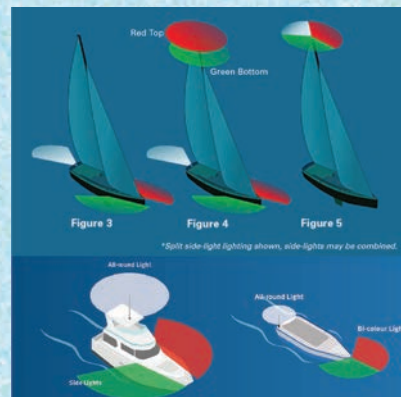


## Skier Down Flag

If you plan on participating in any towing sports (water skiing, wake boarding, tubing, etc.) you must have a skier down flag. The flag is to be red or orange in color and no smaller than 12 inches on each side.

## California Boater Card

As of January 1, 2024 all persons 60 years of age or younger must have a valid California Boater Card to operate a motorized vessel on Big Bear Lake.



## Navigational Lights & Anchor Light

All vessels operating at night on Big Bear Lake are required to have navigational lights and an anchor light.

## Sound Making Device

All vessels are required to have some form of sound making device.



**Year-Round Family Fun**  
With 300 Clear Days A Year!

**Ride Our Double Water Slide** FREE Tanning! Tan at 7,000 Feet!

Unlimited Slide rides ..... \$25  
10 Rides ... \$15 • Each Ride ... \$2  
*Ask About SEASON PASSES*

# Alpine Slide®

at Magic Mountain

Your Alpine Slide experience begins with a scenic chairlift ride above beautiful Big Bear Lake. Then, with you controlling the speed, your toboggan plummets back down the mountain creating a thrill you'll want to relive again and again!

**NEW!!**

**MINE SHAFT COASTER**  
Big Bear Lake

1st & Only in California

**Soaring Eagle Ride!**

Parents Pay Only If They Play!

On Big Bear Blvd. • Big Bear Lake  
1/4 mile West of The Village

**Family Fun! (909) 866-4626**

**www.AlpineSlideBigBear.com**

# Boater Card



Starting in 2018, the California Division of Boating and Waterways mandated that boat operators in California have a boater card when operating a motorized vessel. The California boater card has had a scheduled roll out, with the card becoming mandatory over time. On January 1, 2024, all motorized vessel operators 60 years of age and younger are required to possess a boater card when operating a vessel.

Next year, all motorized vessel operators will be required to have a boater card, regardless of age.

**ALL BOATERS  
60 YEARS OF AGE  
AND YOUNGER  
MUST HAVE A  
BOATER CARD  
TO BOAT ON  
BIG BEAR LAKE**



**COME SEE. COME STAY. COME BACK.**

**LAKE FRONT RV PARK  
FULL SERVICE CAMPING  
MARINA & BOATING FACILITIES  
BAIT & TACKLE • GENERAL STORE**

Family owned and operated since 1962



**Lighthouse**  
trailer resort & marina

**[909] 866-9464**

40545 NORTH SHORE LANE | BIG BEAR CITY

# Decontamination

The BBMWD offers a unique decontamination service to the boaters of Big Bear Lake.

Boaters have the option to call ahead and set up an appointment to have their boat decontaminated prior to launch as an alternate way to pass the entrance inspection. Please note that most vessels can pass inspection with some effort put in before coming to Big Bear Lake. Only vessels with ballast systems are required to go through decontamination prior to launch. Our decontamination process is easy. After setting up an appointment and paying the appropriate fee, you bring your boat to the launch ramp at the assigned time and our ramp attendants will decontaminate your boat. Once a **successful** decontamination is completed, you will be able to purchase a permit and launch. A couple of things to note when it comes to decontamination:

- Bring the keys for the vessel
- Know your boat and how to operate it
- Double check that you have fuel
- Decontamination can take anywhere from 10 minutes to an hour
- All vessels with water ballast tanks are required to go through decontamination

**ATTENTION!**  
If you make an appointment, you will not be refunded unless you cancel at least 24 hours in advance. If you are 15 minutes late to your appointment, both the appointment and fee are forfeit.



**MARINA & RV PARK**

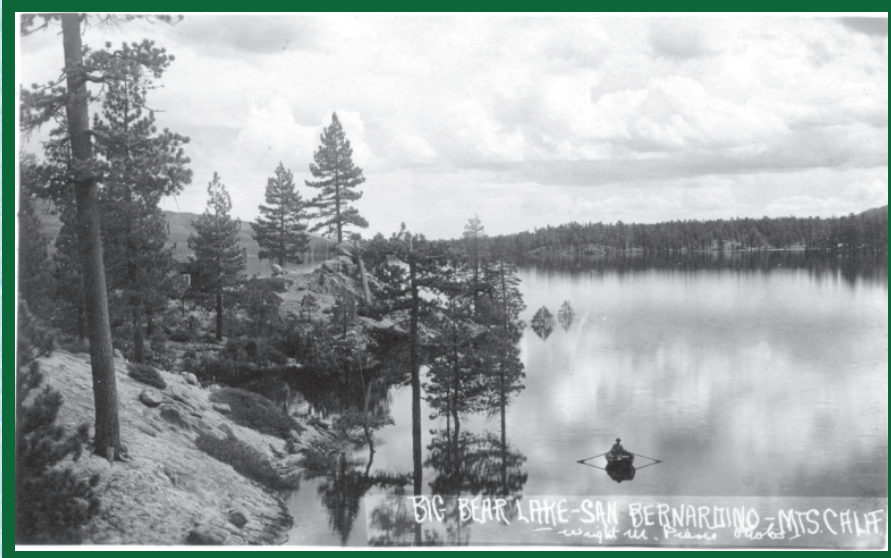
- Full Fleet of Pontoon & Fishing Boat Rentals
- Jet Skis • Kayaks & SUPs • Wake Sports
- Full Hook-Up Level RV Sites (Lakeside Camping)
- Slips & Moorings • Fuel Dock • Bait & Tackle

398 Edgemoor Rd. (South Shore • 3 Miles East of Dam)  
909•866•5706 • 800-448-5335 • [HollowaysMarina.com](http://HollowaysMarina.com) • Book Online

**BIG BEAR PIRATE SHIP**  
Daily Lake Tours: April to Oct.  
Book in Advance 909-866-2231



# Quarantine Band



In addition to decontamination, the BBMWD offers a quarantine banding service. While not as expedient, it is free of charge and will give you a similar result as a decontamination. To get a quarantine band, you need to call the BBMWD Main Office to schedule an appointment. On your appointment day, a BBMWD staff member will perform a quick inspection of the vessel to ensure that there are no invasive species on board and drain out any standing water present. After the inspection is complete, the staff member will attach a special band, connecting the boat to its trailer. Then you will have to wait a minimum of 30 days, leaving that band intact. Once those 30 days have elapsed, you can bring the vessel back to the Main Office. If the quarantine band is intact, we will replace it with a regular inspection band, and you're set to purchase a permit and launch.

## WHERE THE VILLAGE MEETS THE LAKE



**Miss Liberty Paddlewheel Tour Boat is Big Bear Lake's largest tour boat, offering:**

- Fully narrated 1½ hour tour • Tours Available Spring thru Fall (weather dependent) • Twilight Cruises
- Individual & Group Tours • Snack & Refreshment Bar • Private Parties • Weddings & Anniversaries

Pine Knot Marina • 439 Pine Knot Avenue • Call for Reservations and Availability  
909-866-8129 • PineKnotMarina.com



PineKnotMarina.com



### BOATS & RENTALS



### JET SKIS



### KAYAKS & SUPs

FULL SERVICE MARINA  
• 909-633-7511 •

Bow and arrow fishing allowed for carp and catfish

Arrow must be tethered to bow

Bear Creek (below Bear Valley Dam)  
Only artificial lures and barbless hooks may be used  
Bag limit 2

All streams that flow to Big Bear Lake are closed to fishing from March 1 to the Friday before Memorial Day



Spearfishing & Chumming

Current Lake Records Listed below *in Bold*

Trout  
No Size Limit  
Daily Bag Limit 5  
Possession Limit 5



**Rainbow Trout**  
18.69lbs

Carp:  
No size limit  
No bag limit



Catfish

**Bullhead Cat**  
No size limit  
No daily bag limit



**Blue Cat**  
26.65lbs  
No size limit  
Daily bag limit 10

**Channel Cat**  
28.67lbs  
No size limit  
Daily bag limit 10

Panfish  
No size limit  
Combined bag limit of 25 for all species



**Bluegill**    **Crappie**  
0.45lbs      1.68lbs  
**Sunfish**    **Pumpkinseed**

Black Bass  
Minimum size 12"  
Daily bag limit 5



**Largemouth**  
8.03lbs  
**Smallmouth**  
3.80lbs

Crayfish  
No size limit  
No bag limit



May take by hand, hook & line, dip net, or traps.

Caught a monster? Bring it to our Main Office to get an official weight!

Open Monday - Friday, 8:00am - 4:30pm

Other Weigh Stations Located at:

Big Bear Marina: 500 Paine Ct. Big Bear Lake, CA 92315

Big Bear Sporting Goods: 40544 Big Bear Blvd, Big Bear Lake, CA 92315

# The Marsh

On the far East end of the Lake, beyond Stanfield cutoff lies the Stanfield Marsh. Home to numerous birds and mammals, the Marsh is a nature preserve created to provide a home to many sensitive species. As such, most forms of recreation are prohibited in the Marsh. Basically, contact with the water is not allowed. Fishing and bowfishing are permitted as long as the angler/shooter does not enter the water. Most visitors prefer to walk along the Marsh Boardwalk to do some birdwatching or to simply enjoy the preserve.



**FEDERAL PRESERVE - NO BODY CONTACT**

An advertisement for Big Bear Marina. On the left is a logo featuring a fish inside a steering wheel, with the text "Big Bear MARINA" and "The Place on the Lake" below it. To the right of the logo are three small photos: a person on a jet ski, a pontoon boat, and a person fishing from a boat. Further right is a red "Berkley" logo with the slogan "Catch More Fish." Below these elements is the phone number "909.866.3218" in large red font, followed by the text "Located at Paine Ct. &amp; Big Bear Blvd." and "PRO SHOP Official Weigh Station". At the bottom, the website "www.BigBearMarina.com" is displayed in a large, bold, white font with a black outline.

# Quagga Mussels

1980

Originating from a drainage basin in Ukraine, the quagga mussel reached the North America in the late 1980s

First discovered in Lake Erie, the infestation likely began after cargo ships dumped their infested ballast water after a transatlantic voyage.

1990

By 1995, the mussel had found its way as far west as Missouri.

2000

That same year, the mussel was found in California waterways. Lake Havasu and the Colorado River were infested.

Significant effort was made to stop the spread of the mussels across North America. In spite of the efforts, the quagga mussel was discovered in Lake Mead in 2007.

2010

In 2016, Quagga mussels were found in Pyramid Lake, just 3 hours from Big Bear Lake.

2020

Most recently, shells and juvenile mussels have been found at Castaic Lake in 2021. Only 3 hours away from Big Bear Lake, many boaters recreate on both lakes.

Big Bear Lake is still mussel free! The BBMWD is doing everything it can to remain that way.



**Pleasure Point Marina LLC**

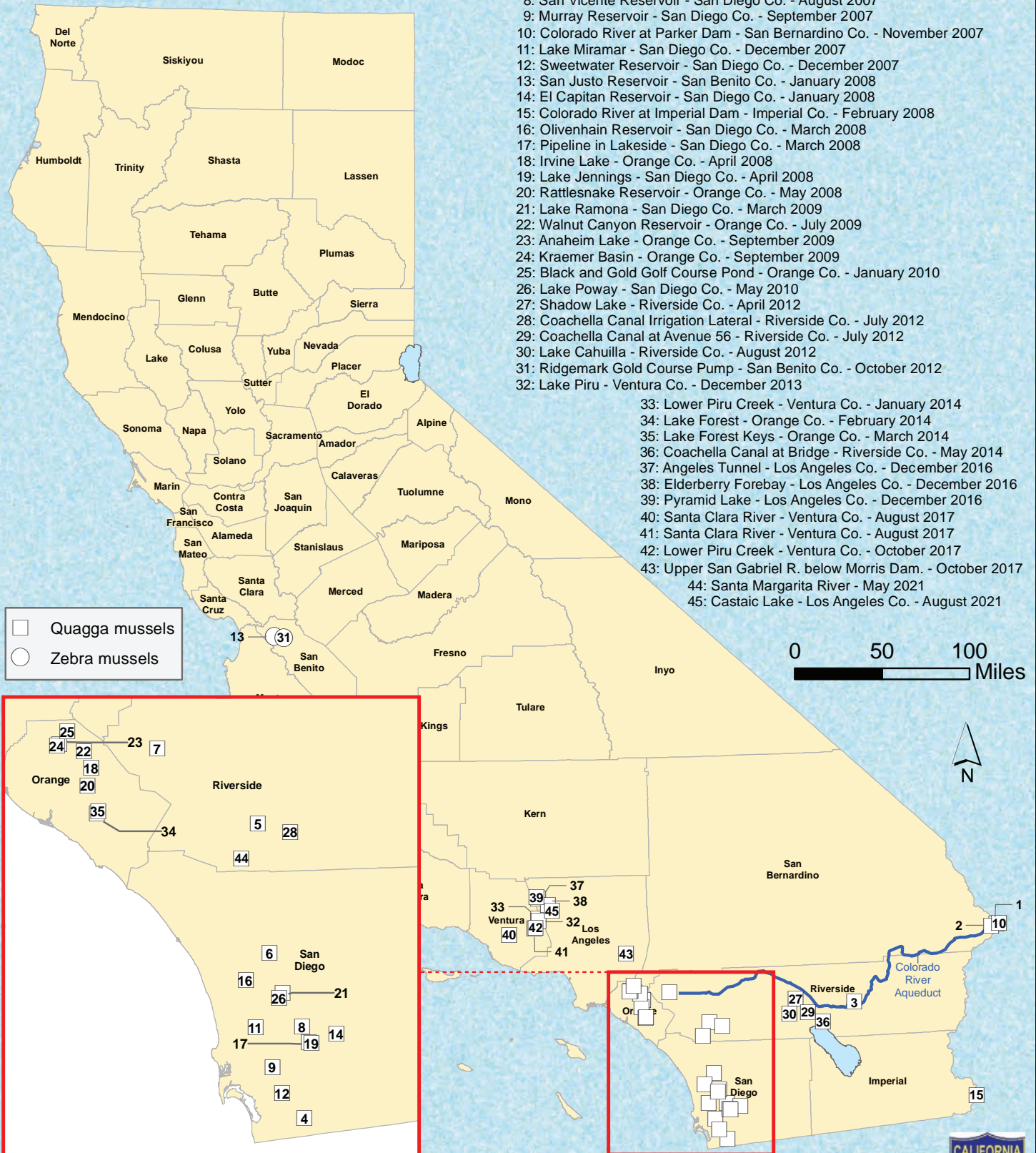
- Boat Rentals
- Slip Rentals
- Kayaks/SUP's
- Fishing Charter
- Jet skis/Wakeboarding
- Full-Service Maintenance Center

603 Landlock Landing Road Big Bear Lake, CA 92315  
(909) 866-2455 | [www.pleasurepointmarina.net](http://www.pleasurepointmarina.net)

# Quagga and Zebra Mussel Sightings Distribution in California, 2007 - 2021

## -----LOCATIONS-----

- 1: Lake Havasu - San Bernardino Co. - January 2007
- 2: Copper Basin Reservoir - San Bernardino Co. - March 2007
- 3: Colorado River Aqueduct - Riverside Co. - July 2007
- 4: Lower Otay Lake - San Diego Co. - August 2007
- 5: Skinner Reservoir - Riverside Co. - August 2007
- 6: Dixon Reservoir - San Diego Co. - August 2007
- 7: Lake Mathews - Riverside Co. - August 2007
- 8: San Vicente Reservoir - San Diego Co. - August 2007
- 9: Murray Reservoir - San Diego Co. - September 2007
- 10: Colorado River at Parker Dam - San Bernardino Co. - November 2007
- 11: Lake Miramar - San Diego Co. - December 2007
- 12: Sweetwater Reservoir - San Diego Co. - December 2007
- 13: San Justo Reservoir - San Benito Co. - January 2008
- 14: El Capitan Reservoir - San Diego Co. - January 2008
- 15: Colorado River at Imperial Dam - Imperial Co. - February 2008
- 16: Olivenhain Reservoir - San Diego Co. - March 2008
- 17: Pipeline in Lakeside - San Diego Co. - March 2008
- 18: Irvine Lake - Orange Co. - April 2008
- 19: Lake Jennings - San Diego Co. - April 2008
- 20: Rattlesnake Reservoir - Orange Co. - May 2008
- 21: Lake Ramona - San Diego Co. - March 2009
- 22: Walnut Canyon Reservoir - Orange Co. - July 2009
- 23: Anaheim Lake - Orange Co. - September 2009
- 24: Kraemer Basin - Orange Co. - September 2009
- 25: Black and Gold Golf Course Pond - Orange Co. - January 2010
- 26: Lake Poway - San Diego Co. - May 2010
- 27: Shadow Lake - Riverside Co. - April 2012
- 28: Coachella Canal Irrigation Lateral - Riverside Co. - July 2012
- 29: Coachella Canal at Avenue 56 - Riverside Co. - July 2012
- 30: Lake Cahuilla - Riverside Co. - August 2012
- 31: Ridgemark Gold Course Pump - San Benito Co. - October 2012
- 32: Lake Piru - Ventura Co. - December 2013
- 33: Lower Piru Creek - Ventura Co. - January 2014
- 34: Lake Forest - Orange Co. - February 2014
- 35: Lake Forest Keys - Orange Co. - March 2014
- 36: Coachella Canal at Bridge - Riverside Co. - May 2014
- 37: Angeles Tunnel - Los Angeles Co. - December 2016
- 38: Elderberry Forebay - Los Angeles Co. - December 2016
- 39: Pyramid Lake - Los Angeles Co. - December 2016
- 40: Santa Clara River - Ventura Co. - August 2017
- 41: Santa Clara River - Ventura Co. - August 2017
- 42: Lower Piru Creek - Ventura Co. - October 2017
- 43: Upper San Gabriel R. below Morris Dam. - October 2017
- 44: Santa Margarita River - May 2021
- 45: Castaic Lake - Los Angeles Co. - August 2021

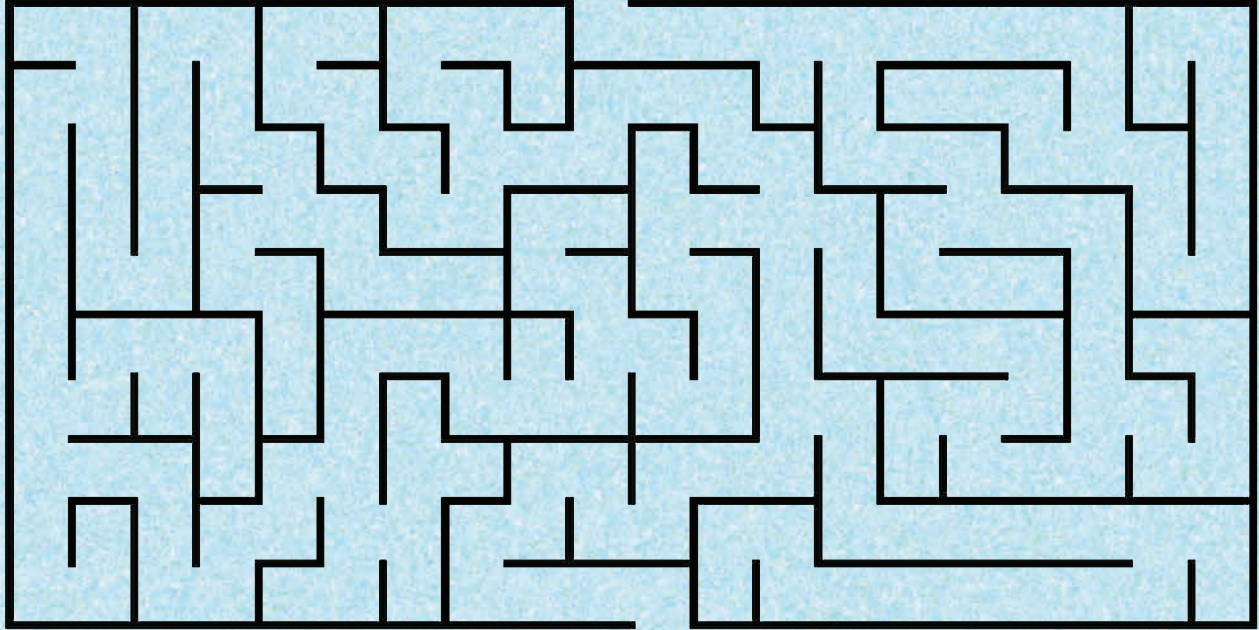


Data Sources: CA Department of Fish and Wildlife, City of San Diego Water Authority, Imperial Irrigation District, Helix Water District, Irvine Ranch Water District, Coachella Valley Water District, National Park Service, CA Department of Water Resources, Los Angeles Department of Water and Power, United Water Conservation District. Map produced by the California Department of Fish and Wildlife, August 20, 2021.



# Games

Help Vessel Inspector Bucky Find the Quagga Mussels!



## Lake Wildlife Word Search

|   |   |   |   |   |   |   |   |   |   |   |   |
|---|---|---|---|---|---|---|---|---|---|---|---|
| Q | G | R | E | B | E | K | Y | G | B | B | C |
| L | V | Z | E | G | R | E | T | E | L | A | A |
| V | E | A | G | L | E | U | X | R | U | S | T |
| L | F | T | R | O | U | T | I | F | E | S | F |
| W | C | R | A | P | P | I | E | G | G | V | I |
| F | G | C | V | H | E | R | O | N | I | L | S |
| N | L | H | L | D | U | C | K | H | L | B | H |
| I | X | D | W | W | T | O | F | X | L | M | A |

Find the following words in the puzzle.

Words are hidden → and ↑.

- BASS
- TROUT
- BLUEGILL
- CATFISH
- CRAPPIE
- DUCK
- EAGLE
- EGRET
- GREBE
- HERON



This symbol indicates that parking at the trailhead requires an Adventure Pass or Interagency Pass



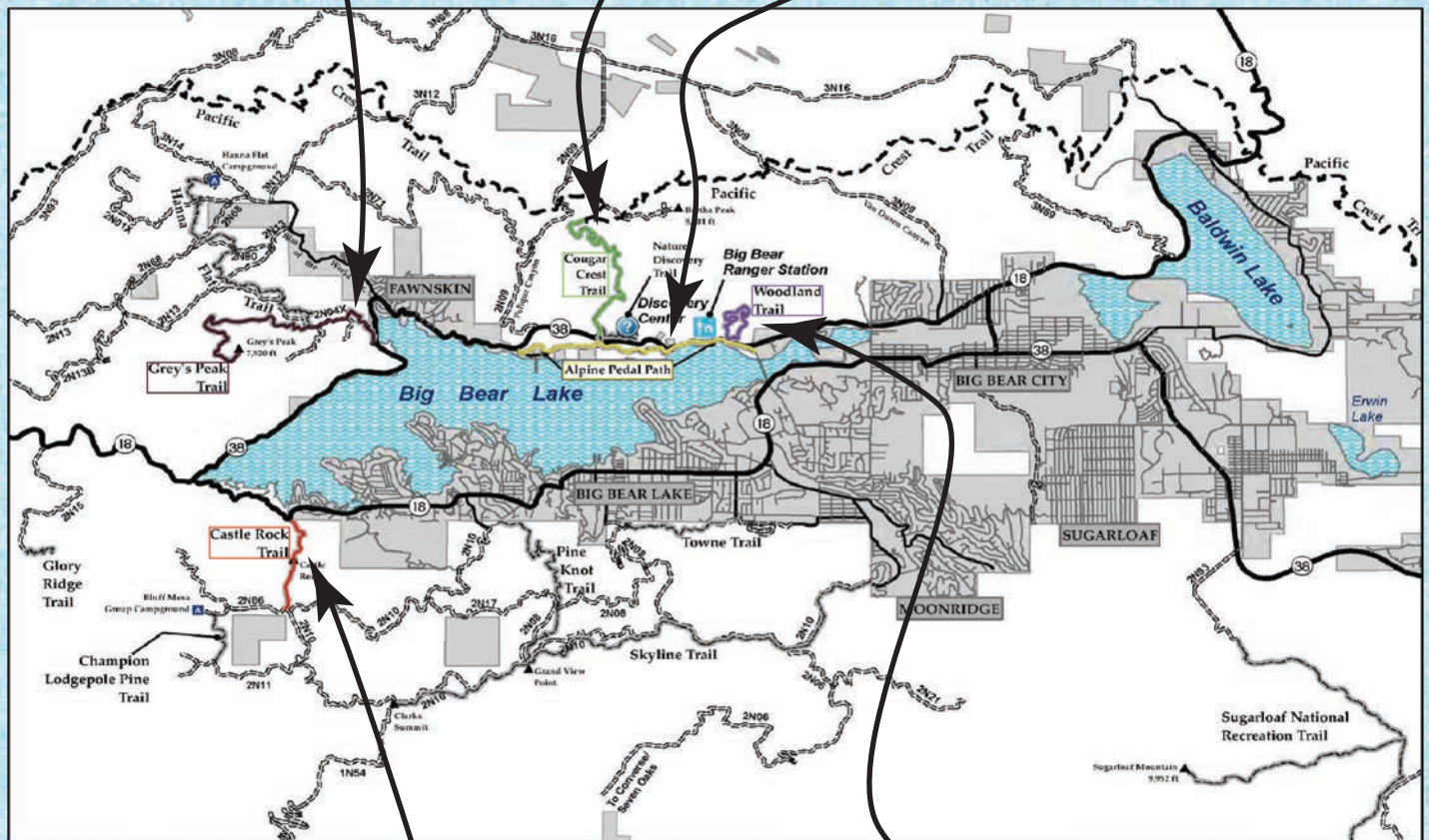
**Grays Peak (1W06)**  
7 miles round trip  
Moderate to Difficult  
Elevation Gain: 1,000ft

**Cougar Crest Trail (1E22)**  
2 miles one way  
Moderate to Difficult  
Elevation Gain: 750ft



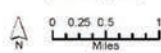
**To Bertha Peak**  
1.5 miles one way  
Difficult  
Elevation Gain: 1,360ft

**Alpine Pedal Path**  
2.5 miles one way  
Very Easy



**Big Bear Valley Trails**  
San Bernardino National Forest/Mountaintop Ranger District  
Big Bear Lake, CA  
August 28, 2013

- Highway
- Major Road
- Local Road
- Forest Road
- Forest Trail
- Pacific Crest Trail (No Bicycles)
- National Forest
- Non-Forest Land



**Castle Rock Trail (1W03)**  
2.4 miles round trip  
Moderate to Difficult  
Elevation Gain: 700ft



**The Woodland Trail**  
1.5 mile loop  
Easy  
Elevation Gain: 300ft

